

# ReplixFax<sup>®</sup> for Solaris



100 percent Sun Solaris fax server solution for unsurpassed reliability and performance

## Enterprise Fax Server for Mission Critical Business Fax Communication

ReplixFax for Solaris enhances your business communication by seamlessly integrating efficient and powerful fax messaging capabilities into your business application and network infrastructure. Built on a robust and scalable architecture with built-in high availability, the ReplixFax solution can handle any network fax requirements that can start from a small departmental configuration to a global, multi-site deployment without compromising performance and reliability.

ReplixFax for Solaris is the fax server of choice by many industries including financial institutions to handle most demanding financial trade transactions. It is fully integrated with automated inbound and outbound fax archiving capability to support regulatory compliance and records management.

## Fax-enable Any Business Application

ReplixFax for Solaris provides fax integration toolkits to “fax-enable” any business application or develop a customized fax application to meet your needs. Available fax API and integration tools include:

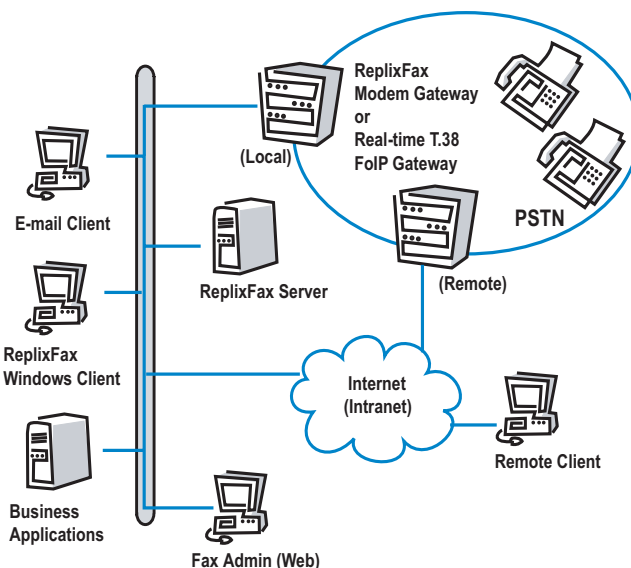
- ReplixFax Java API toolkit
- ReplixFax Windows API toolkit
- Command line Fax API
- Pre- and Post-Fax Event Filters for ad-hoc fax workflow support

Full-featured ReplixFax API's and integration toolkits can easily work with your Windows, Java or custom legacy applications to eliminate costly manual interventions and time delays.

For instance, ReplixFax Java API offers true platform independence by providing application developers with the Java classes required for interacting with the ReplixFax server. This key feature can be incorporated into any application environment—such as trading floor applications, call centers, customer service, e-commerce or CRM.

## Features and Capabilities

- Scalable, high performance system architecture
- Web-based, centralized administration
- Fault tolerance for nonstop availability
- No lost or incomplete fax due to server or network failure during incoming fax reception
- Automated fax-back confirmation to the sender for high value fax transactions
- Comprehensive Fax API and integration toolkits



- Fax data managed in a relational database
- Fax status notification via e-mail
- Server based rasterization of Microsoft Office and ODF documents using Star Office
- Integration with any SMTP e-mail
- Automatic inbound fax routing to e-mail inbox, network printer or multiple users
- Inbound Routing support via DID, DTMF, DNIS, ANI, Fax port or manual routing
- Global phone number dialing rule support
- Least cost routing (LCR) over any IP network to bypass long distance phone charges
- Real-time T.38 fax over IP (FoIP) support
- Retransmission of failed pages
- Full support of global PSTN connectivity—Analog, Digital T1/E1 and ISDN



Visit us online at  
[www.softlinx.com](http://www.softlinx.com)  
Forest Ridge Office Park  
85 Rangeway Road, Bldg 1  
North Billerica, MA 01862  
USA  
Phone: +1.978.439.0100  
Fax: +1.978.439.0022

## Scalable, Distributed Architecture

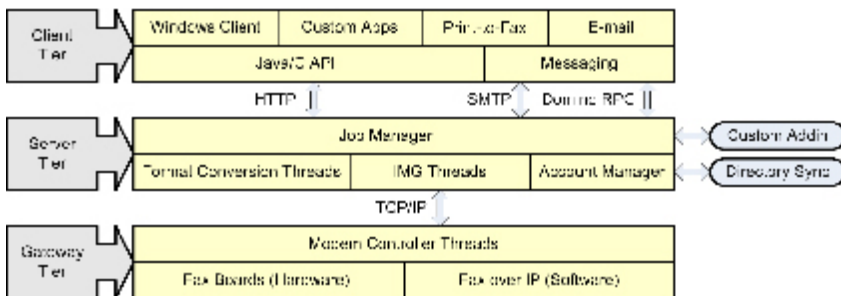
ReplixFax for Solaris is designed for performance and scalability from the ground up. Its three-tier distributed architecture consists of clients, fax servers and intelligent modem gateways (IMG's) that offers unlimited flexibility in configuring your enterprise fax system. You can easily upgrade the server or add extra modem gateways separately. All servers are capable of sending outbound fax traffic through any modem gateway on the network, whether on the same LAN or at a remote WAN location.

## Fax Archiving for Compliance

ReplixFax for Solaris is integrated with commercial document management systems for automated fax archiving and regulatory compliance support. Both inbound and outbound fax documents are automatically captured, indexed and stored for later search and retrieval into a document management system repository. Fax data such as sender identification, fax receive date or DID number can be captured automatically and used for indexing, automated filing and searching a fax document.

## ReplixFax for Solaris technical specifications

● ReplixFax for Solaris Server Platform	Sun Solaris 9, 10
● ReplixFax for Solaris Client Platform	Microsoft Windows XP, Vista
● Email Clients	Any SMTP mail client
● Intelligent Modem Gateway (IMG) Platform	Sun Solaris 9, 10; Microsoft Windows 2003, 2008; Red Hat Linux 4.0, 5.0
● Fax Boards and FoIP Software	Dialogic® Brooktrout® Analog and Digital T1, E1 and ISDN fax cards, SR140 FoIP software
● Telephone Network	Analog, Digital T1, E1, ISDN
● IP Fax Support	Real-time T.38 Fax over IP, Store-and-forward T.37 Email to Fax, IP Least Cost Routing
● Inbound routing	DID, DTMF, DNIS, CSID, ANI, Fax Port, Network Printer or Manual Routing
● Server-based rasterization for native file attachments	ASCII text, TIF, Postscript, PDF, Microsoft Office*, ODF *requires Star Office



## The Softlinx Solution

Softlinx ReplixFax is an ideal enterprise fax solution to consolidate all of your fax communication needs across multiple office locations, or replace multiple legacy fax servers into a single, centralized Fax over IP (FoIP) system. Softlinx helped many leading organizations worldwide successfully automate their business fax communications and save costs. Softlinx is a leading vendor for mission critical business fax messaging solutions you can depend on.

## Web-based Server Administration

With a full set of central administration and management capabilities, ReplixFax administrators can check the status of all faxes in queue, manage and control user accounts and server configurations, and troubleshoot the local or remote system using a Web browser. Server logs can be viewed and managed through the Web administration interface and can be used for remote diagnostics and troubleshooting. Multi-level (Server, Department, User) user management capability provides a convenient method to manage hierarchical fax preference settings and control over the web according to enterprise organizational structure and preferences.

For more information on ReplixFax for Solaris, visit our website at <http://www.softlinx.com>.



Visit us online at  
[www.softlinx.com](http://www.softlinx.com)  
 Forest Ridge Office Park  
 85 Rangeway Road, Bldg 1  
 North Billerica, MA 01862  
 USA  
 Phone: +1.978.439.0100  
 Fax: +1.978.439.0022